

Left side

Right side

# Owners Manual

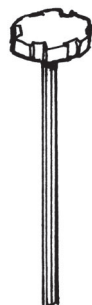
## Mounting instructions Öhlins suspension kit HOV 6A000 for Honda S2000 rear

10

Fit the adjuster key to the top of the left shock absorber, after the upper bracket is tightened. Put left and right units back from underneath the car and fix the three bracket nuts from the inside of the luggage compartment.

### NOTE!

Before the shock absorber on the left side is fitted, the adjuster device/key MUST be in position. When the shock absorber is mounted the fuel lines will make it impossible to fit the tool.



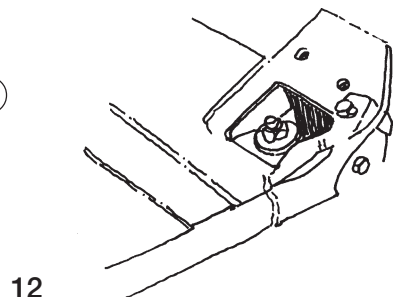
11

Attach the lower bracket to the link arm and preload the spring. The distance between the upper surface of the cylinder head reservoir and the lower surface of the spring platform should be 11 mm.

### Set-up data

Length	482,1 mm
Stroke	93,6 mm
Rebound adjustment	16 clicks
Preload	16 mm

10

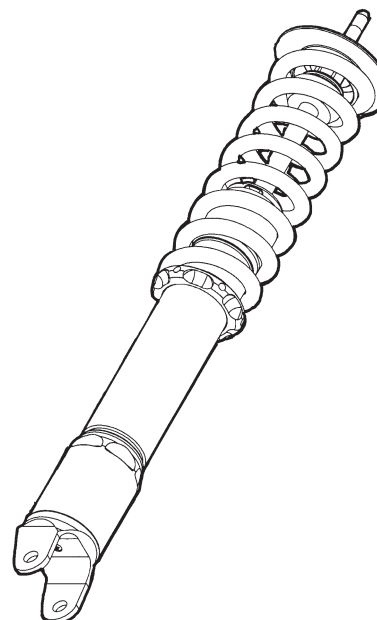
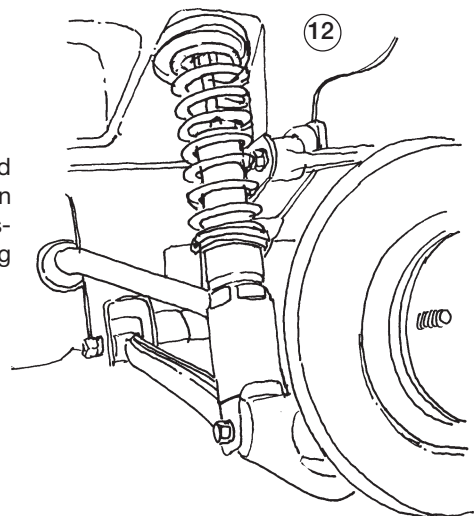


12

Reassemble the sway bar and continue your work according to Owners manual, Adjustments.

### NOTE!

Make sure that all bolts are tightened to the correct torque and that nothing fouls or restricts movement of the shock absorber when the suspension is being fully compressed or extended.



### Öhlins suspension 46 UR

Your Öhlins shock absorber type 46 UR features the following adjusters:

#### Rebound damping

Adjuster tool is inserted from top of the shock absorber.

#### Spring preload

Adjustment made by screws on cylinder head. Use C-spanner.

When delivered the Öhlins shock absorber is dialed to recommended settings for the specific brand and make of the car. If you have changed the setting check like this:

The adjusters have a normal right hand tread. Turn clockwise to fully closed. Turn counter clockwise to open and count the clicks until you reach the recommended number of clicks.

Do not use too much force, delicate sealing surfaces can be damaged.

Part No. HOV 6A000 rear. Issued 02 05 22



Öhlins Racing AB, Box 722, S-194 27 Upplands Väsby, Sweden.  
Phone +46 8 590 025 00. Fax +46 8 590 025 80. www.ohlins.com

© Öhlins Racing AB. All rights reserved. Any reprinting or unauthorized use without the written permission of Öhlins Racing AB is prohibited. Printed in Sweden.



**Safety signals**  
Important information concerning safety is distinguished in this manual by the following notations:



**The Safety alert symbol means:**

**Caution!** Your safety is involved.



**Failure to follow warning instructions could result in severe or fatal injury to anyone working with, inspecting or using the suspension, or to bystanders.**

### CAUTION!

**Caution indicates that special precautions must be taken to avoid damage to the suspension.**

### NOTE!

**This indicates information that is of importance with regard to procedures.**

## Before installation

Ohlins Racing AB can not be held responsible for any damage whatsoever to suspension components or vehicle, or injury to persons, if the instructions for fitting and maintenance are not followed exactly.  
Similarly, the warranty will become null and void if the instructions are not adhered to.

### ⚠ WARNING!

**1. Installing suspension components, that is not approved by the vehicle manufacturer, may affect the stability of your vehicle. Ohlins Racing AB cannot be held responsible for any personal injury or damage whatsoever that may occur after fitting the suspension components. Contact an Ohlins dealer or other qualified person for advice.**

**2. Please study and make certain that you fully understand all the mounting instructions and the owners manuals before handling this suspension components kit. If you have any questions regarding proper installation procedures, contact an Ohlins dealer or other qualified person.**

**3. The vehicle service manual must be referred to when installing the Ohlins suspension components**

Ohlins products are subject to continual improvement and development. Consequently, although these instructions include the most up-to-date information available at the time of printing, there may be minor differences between your suspension and this manual. Please consult your Ohlins dealer if you have any questions with regard to the contents of the manual.

### NOTE!

**During storage and transportation, especially at high ambient temperature, the oil and grease used for assembling may run out inside the packing and damage the expanded polystyrene packing material. This is not unusual and is in no way detrimental to the suspension components.**

## Kit contents

Before installing the suspension components, please check the contents of the kit. If anything is missing, contact your Ohlins dealer.

Description	Pcs.
Shock absorber	HOV6A000
Sticker Ohlins	00192-01
Nut	00197-03
Spring support	00539-01
Washer	05860-01
Adjuster	01743-01
Owners Manual	1

## Mounting instruction

**1**

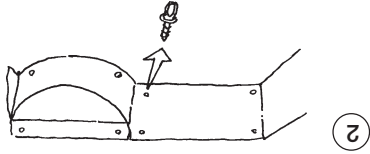
Lift the car so the rear wheels are clear of the ground. Make sure it's steadily fixed so it will not fall down.

### ⚠ WARNING!

**1.** It's advisable to have an Ohlins dealer or other qualified person to fit your shock absorber.  
**2.** Instructions in the vehicle service manual are to be followed when changing the shock absorber.  
**3.** When working on a lifted vehicle it must be securely supported to prevent it from falling.

**2**

Remove the covers in the luggage compartment by pulling the plugs out. Remove the spare wheel.



**3**

Loosen the two nuts holding the upper shock absorber bracket on each side

**4**

Loosen the lower shock absorber attachment on the link arm.

**5**

Loosen the lower sway bar attachments, so the wheels can be lowered.

**6**

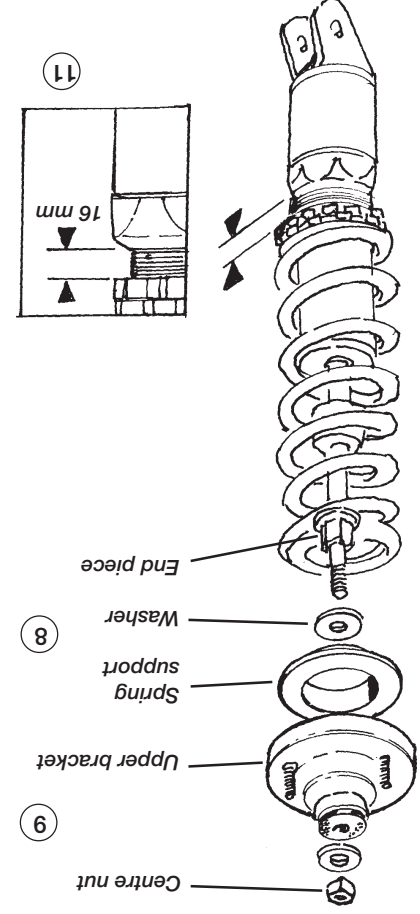
Remove the stock shock absorbers.

**7**

Preload the spring, so the upper nut, holding the upper bracket, can be turned loose. Remove the bracket.

**8**

Fit the washer (05860-01) and the spring support sleeve (05856-01) provided into the upper bracket. Fit the spring to the Ohlins shock absorber.



**9**

Attach the upper bracket to the Ohlins shock absorber and tighten the centre nut.

### NOTE!

Before attaching upper bracket loosen the spring platform as much as possible by turning it downwards.

### CAUTION!

The washer must be in position to prevent the end piece from penetration of the rubber at the top mount.